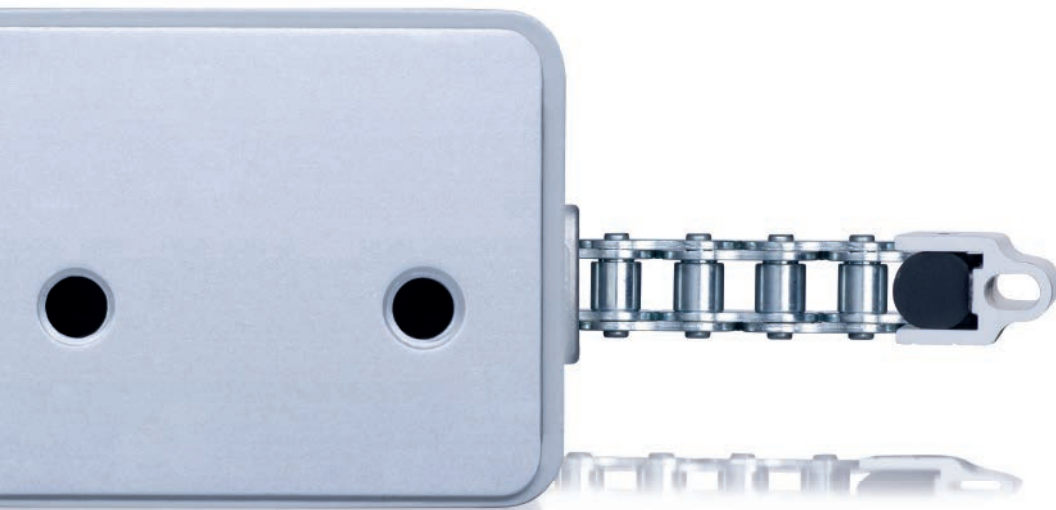


+ VERSATILE
APPROVED



KA SERIES

True all-rounder

- » Individual solutions due to a high level of flexibility for application
- » Fits all common window types
- » Quick and easy installation due to optimum coordination of the bracket sets
- » Can be used universally for SHEV and controlled natural ventilation

All-round talent

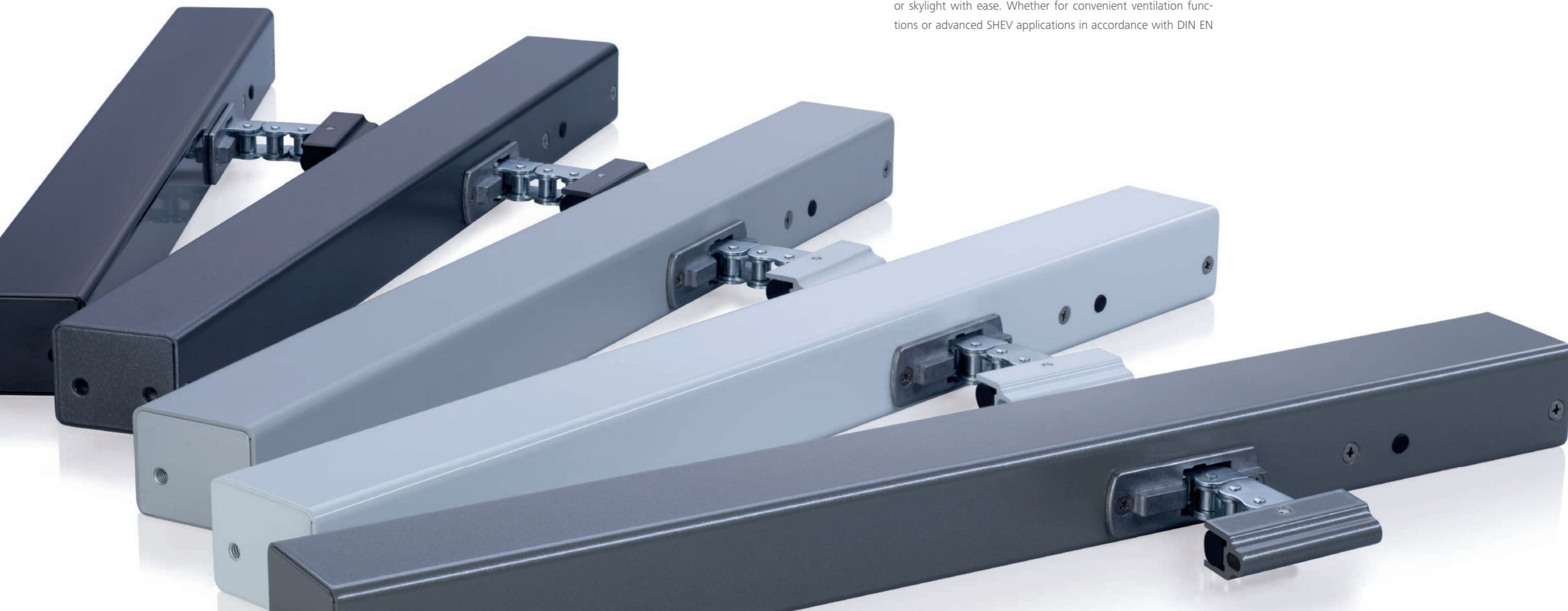
- » Customized stroke length and construction dimension changes optionally available
- » Unique bracket solutions for safe and time-saving installation on window profiles
- » High-speed function (-HS) for very quick opening of the window in the case of a fire (SHEV)
- » Microprocessor-controlled PLP motor electronics, alternatively, BSY+ synchronised electronics for synchronisation of up to 8 drives
- » Fire resistance (30 min / 300 °C) and 10,000 double strokes at nominal load
- » Additional passive and active anti-trap protection system for the main closing edge
- » Available as 24 V and 230 V versions
- » Housing made of high-quality aluminium
- » Highly efficient, extremely low-noise gearbox
- » High-performance grease from hardened and galvanised steel with lifetime lubrication
- » Extreme flexibility thanks to the easy parameter configuration for functions on a PC using D+H SCS software
- » Inspected and approved in accordance with globally approved standards, approval in accordance with VdS 2580 and VdS 2344, UL 325

+ FLEXIBILITY EASE

The versatile all-rounder

A multitude of designs make it possible to use the KA Series chain drive for all common window types. As a true all-rounder, it provides a custom fit to meet your requirements and features a variable length dimension as well as the option to adjust force and stroke individually. The BSY+ synchronised electronics can be used to control multiple drives at the same time upon request. So much variety in only one drive - nothing is likely equal that. A force of pressure and tensile force up to 600 N and a stroke length up to 1300 mm allows this window drive to control the movement of almost any façade window, roof window or skylight with ease. Whether for convenient ventilation functions or advanced SHEV applications in accordance with DIN EN

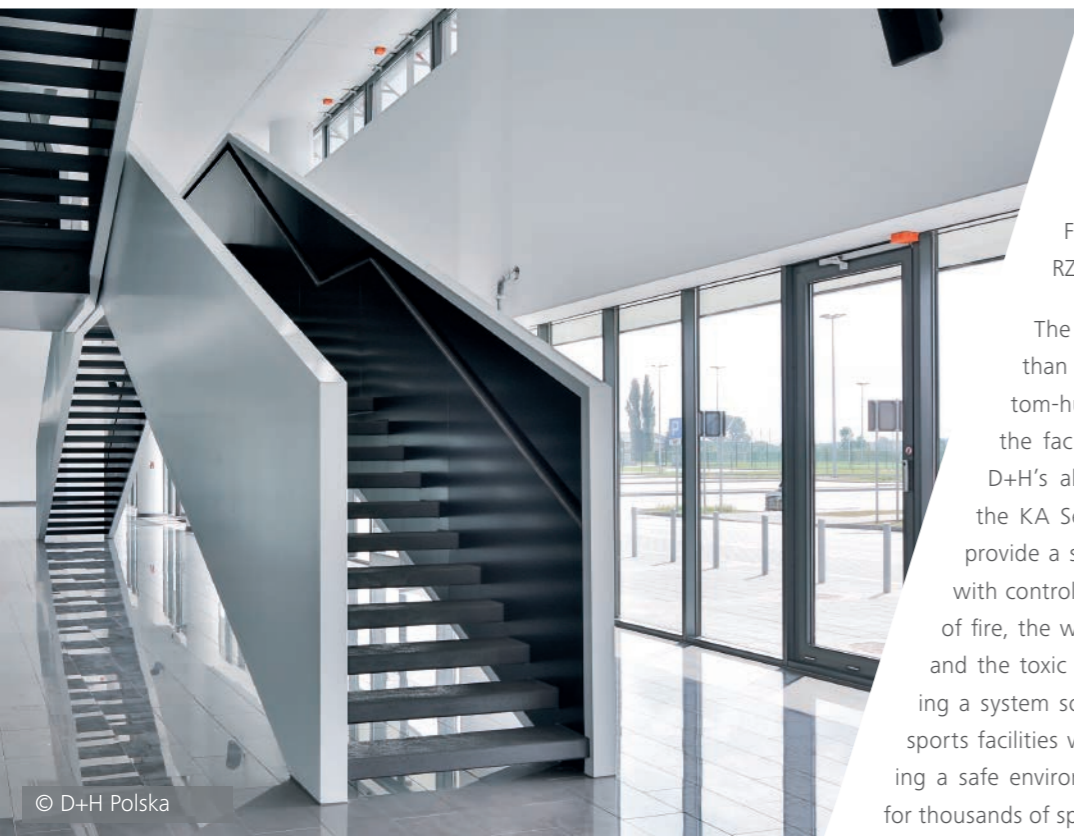
12101-2, the KA Series is equipped with integrated high-speed function (HS) by default to open windows in just 60 seconds in case of fire. For safety purposes, all drives of this series are equipped with an additional passive and active anti-trap protection system. And all of this in tried-and-tested D+H quality: The consistent use of high-quality materials and the sturdy high-performance chain ensure a long service life and reliable operation. Individually adjustable, reliable and cost-effective at the same time: The versatile KA Series drives have been proven in thousands of applications around the world.





+ VARIANTS RANGE

© D+H Polska



© D+H Polska

Arena Lublin

- Lublin, Poland
- SHEV
- KA Series
- FRA Series
- RZN Series

The Arena Lublin stadium in Poland holds more than 15,000 sports fans. The numerous bottom-hung windows in the luxury boxes and in the facilities inside the stadium are driven by D+H's all-around talent - the chain drives of the KA Series. Some 32 installed chain drives provide a smart SHEV solution in coordination with controller systems and lock drives. In case of fire, the windows are opened automatically and the toxic gases can escape. D+H is creating a system solution for public assembly and sports facilities with this approach, guaranteeing a safe environment and sports enjoyment for thousands of spectators.

+ PROJECT REALISATION

KA 34 / 54 *				
Type	Dimension in mm	Stroke in mm	Force of pressure in N	Tensile force in N
KA 34/350	421 x 40 x 51	350	300	300
KA 34/500	496 x 40 x 51	500		
KA 34/600	546 x 40 x 51	600		
KA 34/700	596 x 40 x 51	700		
KA 34/800	646 x 40 x 51	800		
KA 34/1000	750 x 40 x 51	1000	500	500
KA 54/350	421 x 40 x 51	350		
KA 54/500	496 x 40 x 51	500		
KA 54/600	546 x 40 x 51	600		
KA 54/700	596 x 40 x 51	700		
KA 54/800	646 x 40 x 51	800		
KA 54/1000	750 x 40 x 51	1000		
KA-PLP	Variable configuration possible			

KA 66-TW *				
Type	Dimension in mm	Stroke in mm	Force of pressure in N	Tensile force in N
KA 66/500-TW065	997 x 40 x 51	500	600	600
KA 66/350-TW1	1347 x 40 x 51	350		
KA 66/500-TW1	1347 x 40 x 51	500		
KA 66/600-TW1	1347 x 40 x 51	600		
KA 66/800-TW1	1347 x 40 x 51	800		
KA-TW-BSY+	Variable configuration possible			

*All variants are available with BSY+ technology and at either 24 V or 230 V!



The KA-TW

One drive, twice the force

Specifically developed for particularly wide and heavy façade and roof windows, skylights and ventilation flaps: The KA-TW, which places two drive chains in one housing, provides twice the force of pressure and tensile force for uniform load distribution on the window sash.



Variety with system

Extensive, system-specific bracket solutions are available with the KA Series. Get an overview:

System vendor	Series
Aluprof®	MB-SR50, MB-RW
Colt®	Kameleon E
Gutmann®	S70
Heroal®	180 (ES), C50 HI
Raico®	Wing 105D, FRAME+ 100/120 RI (-T)
Reynears®	CR 120, FRV
SAPA®	SFB
Schüco®	AWS 57 RO
Wicona®	Wictec 50/60

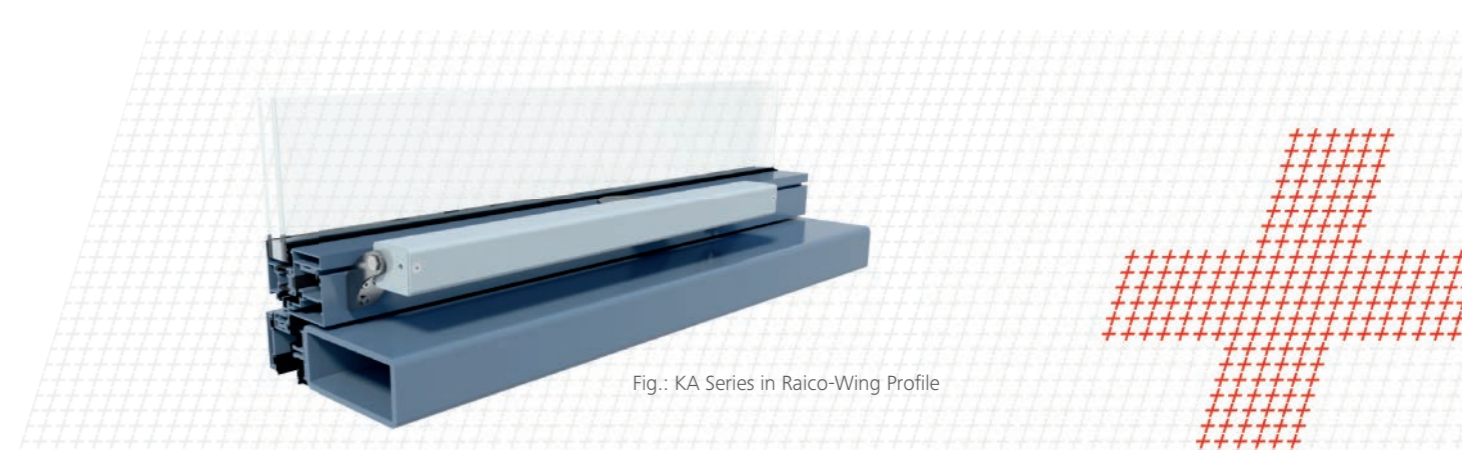


Fig.: KA Series in Raico-Wing Profile



D+H Mechatronic AG
Georg-Sasse-Strasse 28-32
22949 Ammersbek
Germany

Phone: +49 40 60565 0
Telefax: +49 40 60565 222
E-mail: info@dh-partner.com

WWW.DH-PARTNER.COM

Your D+H Service and Sales Partner: